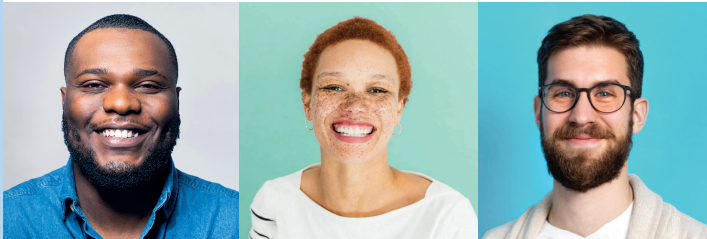


CASE MANAGEMENT FOR CHILDREN AND PREGNANT WOMEN

You can become a case manager.

What is case management?

Case Management for Children and Pregnant Women (CPW) is a Medicaid benefit that provides health-related case management services to children from birth through age 20 with a health condition and to high-risk pregnant women of any age. Case managers help people access needed medical, social, educational and other services.



Who can be a CPW case manager?

A case manager must be a licensed social worker or registered nurse. Case managers may work independently or may be employed by or contract with an agency.

Bilingual case managers are needed.

What do case managers do to connect people with services?

Case managers help people with services such as:

- Accessing behavioral health services or developmental testing.
- Assisting with the special education process or school issues.
- Helping with transition planning.
- Addressing issues such as substance abuse, homelessness or domestic violence.



How to become a case management provider.

Individuals and agencies must apply with the Texas Health and Human Services Commission and enroll with Medicaid. Email HHSC at **AskCM@hhsc.state.tx.us** for information on how to become a case management provider.

Once approved by HHSC, a case management provider may contract with the managed care organizations in their area to provide services.



To learn more about Case Management for Children and Pregnant Women go to hhs.texas.gov/case-management-provider



Case Management
for Children and
Pregnant Women